



From £600,000

## Rockbeare Devon EX5 2FP

### Coming Soon

A choice of 2 brand new individual detached houses with superb far reaching rural views.

Both houses offer 4 bedrooms and 2 bathrooms with modern reverse level accommodation with large balconies at first floor level off the sitting room taking in the south facing views.

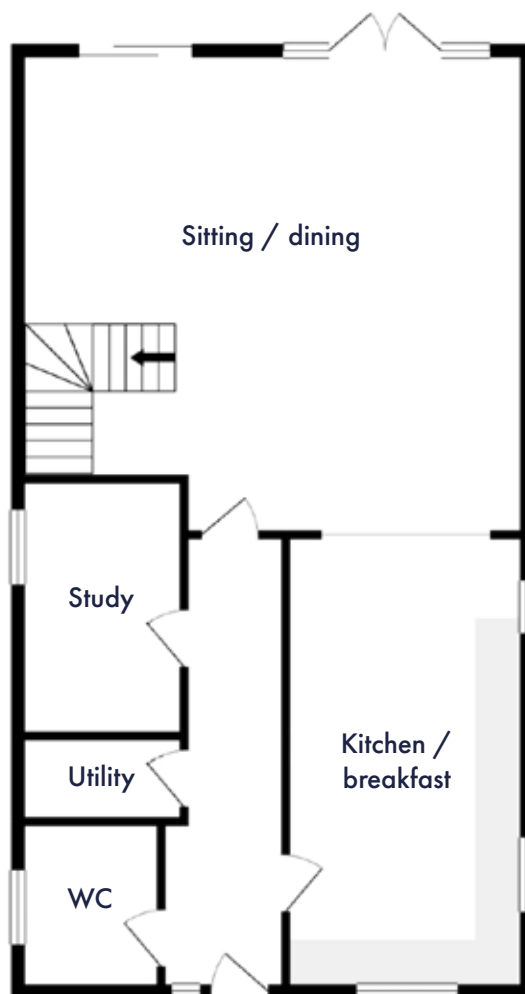


TOWERGATE  
ESTATES

# Rockbeare, Devon EX5 2FP

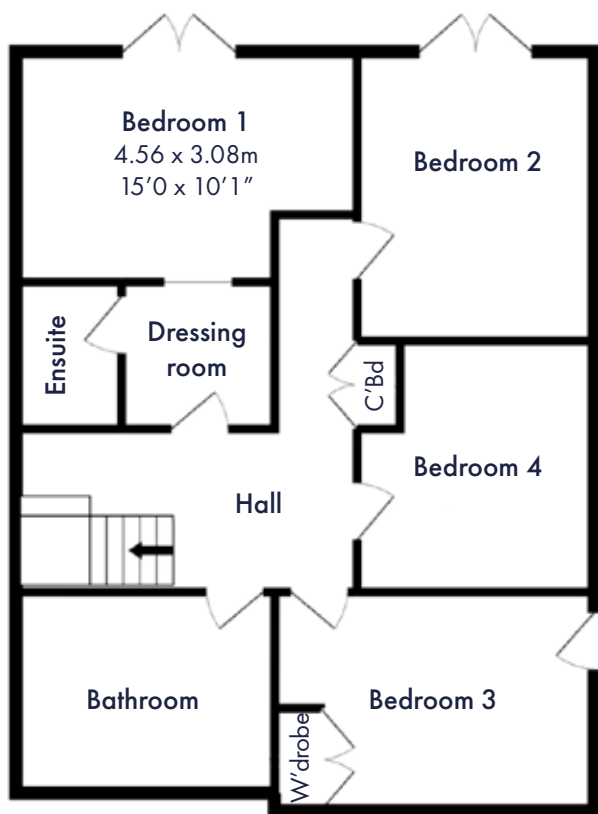
## GROUND FLOOR

922 sq.ft. (85.7 sq.m.) approx



## LOWER GROUND FLOOR

836 sq.ft. (77.7 sq.m.) approx

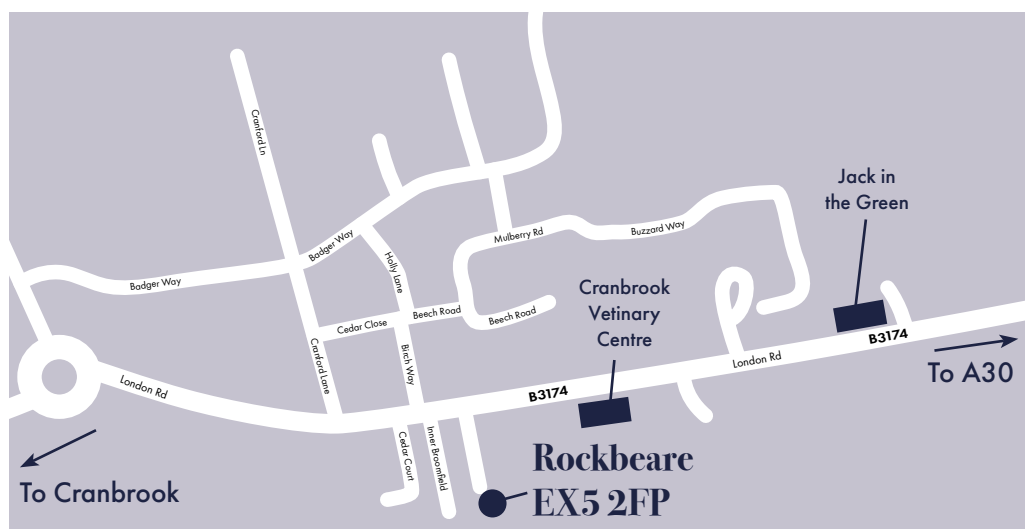


## LOWER GROUND FLOOR

Bedroom 1	4.56 x 3.08m	15'0" x 10'1"
Bedroom 2	3.17 x 3.87m	10'5" x 12'8"
Bedroom 3	4.27 x 2.93m	14'0" x 9'7"
Bedroom 4	3.17 x 3.36m	10'5" x 11'0"
Bathroom	3.46 x 2.69m	11'4" x 8'10"
Ensuite	1.41 x 1.96m	4'7" x 6'5"

## GROUND FLOOR

Sitting/dining	6.81 x 6.48m	22'4" x 21'3"
Kitchen/breakfast	3.23 x 6.11m	10'7" x 20'1"
Study	2.22 x 3.43m	7'3" x 11'3"
Utility	2.22 x 1.15m	7'3" x 3'9"
WC	1.91 x 2.27m	6'3" x 7'5"



TOWERGATE  
ESTATES

FOR MORE INFORMATION  
PLEASE CONTACT

020 7183 7995

enquiries@towergateestates.com