

6


Sarlsdown House
EXMOUTH | DEVON



A Sanctuary in The Avenues

Sarlsdown House sits proud on a quiet, residential tree-lined street in The Avenues; one of Exmouth's most sought-after neighbourhoods. The house is majestic of appearance and classical in design. Large bay windows, allowing an expanse of light into the property, are a striking feature.

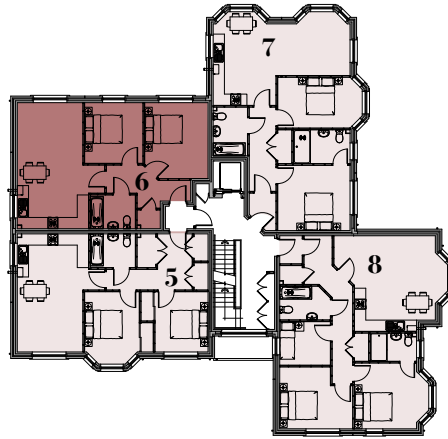
A discreet, electric gated private entrance leads to a collection of ten luxurious apartments. There is level flooring throughout the house and lift access, ensuring easy reach to all floors. Each of the apartments has an allocated parking space.

The apartments are designed to facilitate modern living within an environment of exceptional quality and sophistication. The fitted kitchens come with top-of-the-range appliances, and the Mayflower bathrooms offer both opulence and comfort.

6


Sarlsdown House
EXMOUTH | DEVON

Perfect for a small family or couple, Apartment 6 is spacious and light. As you enter the property you will find two double bedrooms and a family bathroom. There is a handy storage cupboard in the hall. A beautiful open plan kitchen, dining and living area are designed with two large windows to allow a flow of light into the property.



First Floor

Internal Areas:

Kitchen/Dining/Living
3.80m x 6.72m - 12'4" x 22'0"

Bedroom 1
3.37m x 4.05m - 11'0" x 13'2"

Bedroom 2
3.20m x 3.23m - 10'4" x 10'5"

Total Internal Area:
64.41 Sq m / 693.3 Sq ft

