

# W

# woodbury house

EXMOUTH | EAST DEVON



## Apartment 3

Woodbury House is an elegant building of classic design, on a tree-lined avenue in one of Exmouth's most desirable addresses. Woodbury House offers ten, luxury two-bedroom apartments.

There is a landscaped courtyard to the front of the house and an allocated parking space for each apartment.

Inside, there is a communal hallway allowing access to the ground floor apartments. A stairway leads up to the first floor and penthouse apartments. There is lift access and level flooring throughout.

There are four apartments on the ground floor and the first floor, and two apartments on the second floor.

Three of the apartments on the ground floor benefit from a beautiful outdoor space, ideal for children to play in, or for summer entertaining around a barbecue.

Woodbury House has a fully-fitted audio door entry system, allowing secure and private access.

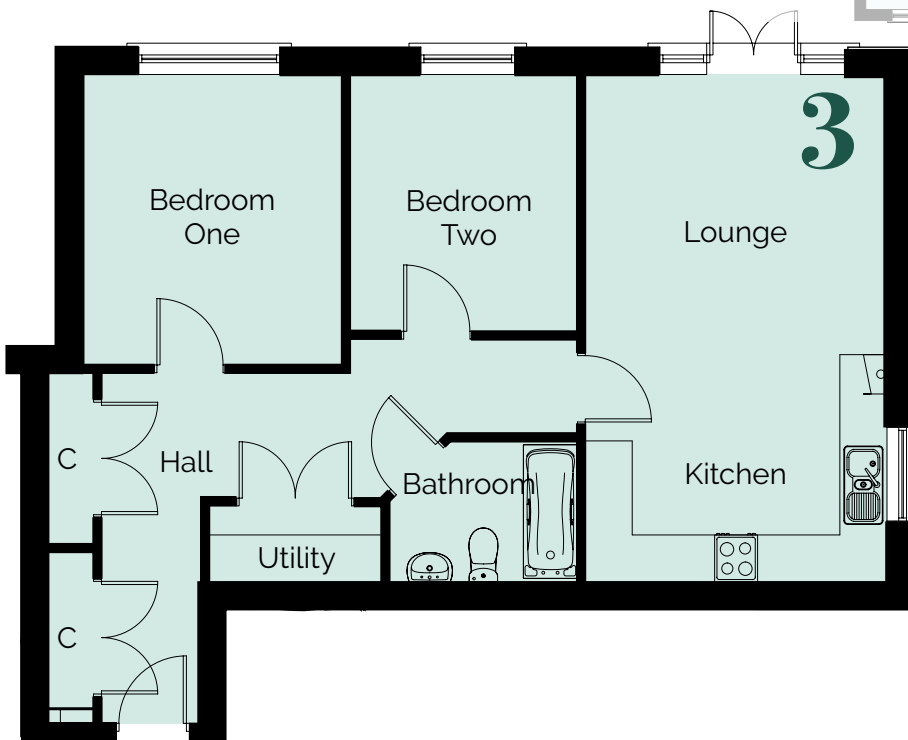


# woodbury house

EXMOUTH | EAST DEVON

This two bedroom, ground floor apartment centres on the generous open plan kitchen and living area. A set of French doors lead out to the rear turfed garden, ideal for summer days. There are two double bedrooms with large windows, giving the apartment a light appearance. The family bathroom is fully tiled, accessible from the hall. There are also three large storage cupboards with double doors, great for those who need a little extra space.

## Ground Floor



## Apartment 3

Lounge / Kitchen	6.46m x 3.85m	21'2" x 12'7"
Bedroom One	3.70m x 3.30m	12'2" x 10'10"
Bedroom Two	3.27m x 2.90m	10'9" x 9'6"

All measurements given are approximate, for further details please contact the agents. Dimensions given are done so in good faith and before construction has commenced. They are approximate and for guidance only and should not be used for furniture or appliance purchases. Purchasers are strongly advised to confirm actual dimensions when the property is nearing completion or is completed.